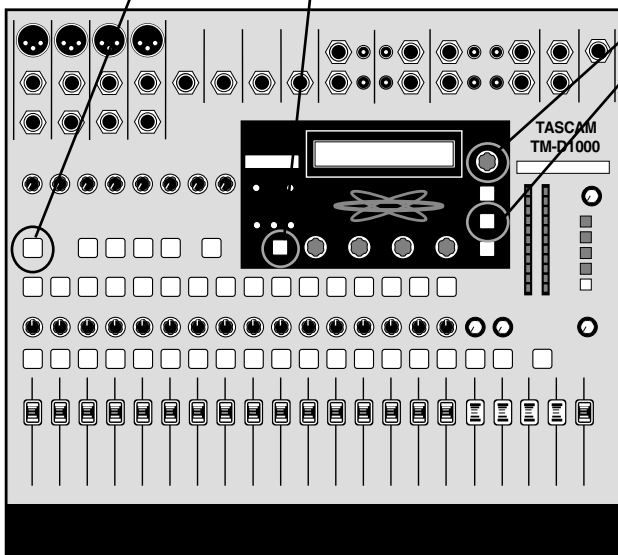

TASCAM®

Loading the TM-D1000 Snapshots (TASCAM's Presets) 8/99

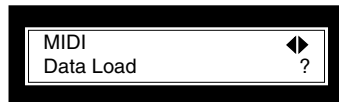
1) Press **SHIFT** and **PARAM SEL** simultaneously.



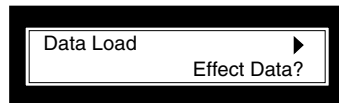
2) Rotate the Data Entry dial to **MIDI**.
Press **ENTER**.



3) Rotate the Data Entry dial to **Data Load**.
Press **ENTER**.



4) Rotate the Data Entry dial to **EFFECT DATA**.
Press **ENTER** twice, and start dumping the data.



The data in the MIDI file in measures 1-4 are for the Effects. Once the data has been loaded, Stop the sequencer and press ESCAPE on the TM-D1000. You do not need to cycle the power on the unit to begin using the effects... they are loaded.

To load your snapshots, repeat the same process as above, but select SNAPSHOT Data instead of Effect Data in step 4. The snapshot data in the MIDI file starts at measure 6. Once that is loaded, you're all set!
